

Ready to Wear
& Re-useable
Face Mask



WEAR & CARE INSTRUCTIONS



Wear and Care Instructions

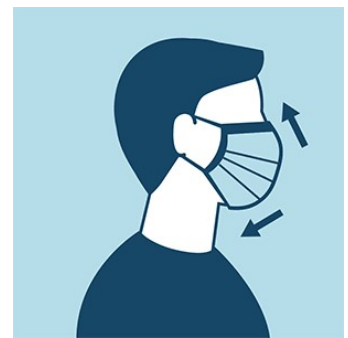
AUSTRALIAN MADE

Jobskin face masks are Australian made and designed using 100% breathable woven cotton fabric. Pockets have been added into the masks to allow for the addition of secondary filters (not provided). Our standard size is designed to fit most adults. Small and larger sizes are also available.

Face masks are recommended to be worn where other social distancing measures are difficult to maintain.
Important: This Jobskin face mask is not intended for use as a surgical mask or N-95 respirator.

Quality masks should:

- Fit snugly but comfortably against the side of the face.
- Be secured with ties or ear loops.
- Include multiple layers of fabric.
- Allow for breathing without restriction.
- Be able to be laundered and machine dried without damage or change to shape.



Care Instructions:

To maintain Jobskin masks in good condition and to gain as much benefit as possible, please observe the following suggestions for their care.

- Masks should be washed before wearing for the first time.
- Masks should be washed after each use or daily depending on the frequency of use.
- Machine wash is acceptable.
- Use mild detergents only. Do not bleach.
- Warm machine wash. Ideally above 60 degrees.
- Do not tumble dry.

***Precautions:** This cloth face mask is not intended for use as a surgical mask or N-95 respirator. The purpose of the mask is to slow the spread of a virus or reduce the likelihood of spreading a virus. Masks should NOT be placed on young children under the age of 2, or on anyone who has trouble breathing or otherwise unable to remove the mask without assistance. Individuals should be careful not to touch their eyes, nose or mouth when removing their mask.*

Product of Double Life P/L T/A Jobskin

Unit 1 / Level 1 / 100 Station Street, Nunawading, Victoria 3131 Australia.

Aus Ph: 1800 772 577 - NZ Ph 0800 765 627 E customer.service@jobskin.com W www.jobskin.com